

- 1 Storm over Derbyshire (6.13)
- 2 Summer Peaks (6.18)
- 3 Derbyshire Jig (3.02)
- 4 Mills & hills, mines & moors (6.38)
- 5 Eyam (5.05)
- 6 Down in yon forest (2.35)
- 7 Arbor Low (4.26)
- 8 Have you seen the moon? (5.37)
- 9 Back home (3.38)
- 10 With you and the larks (4.24)
- 11 White Peak, Dark Peak / The Devil's Elbow (7.05)
- 12 This is Morris Dancing (5.37)
- 13 Shaw Croft (4.47)

- (P Biggins)
 (W Kirkland)
 (P Sprakes)
 (S Salfield)
 (K Clegg/R Clegg)
 (arr W Kirkland/P Sprakes)
 (R Clegg/K Clegg)
 (P Biggins)
 (R Littlefield)
 (P Biggins)
 (S Salfield/R Clegg/K Clegg/P Biggins)
 (R Clegg/K Clegg)
 (R Clegg/K Clegg)

Backing Tracks recorded 10th & 11th December, 2011,
 Burton Institute, Winster
 Overdubs & Production December 2011 – April 2012,
 at the Greenhouse, Derbyshire
 Produced & Mixed by Reg Clegg
 Design by Reg & Karen Clegg

© 2012 JET COLLECTIVE

© 2012 JET COLLECTIVE
 5055610726029

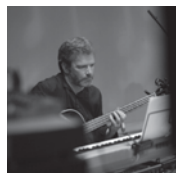
JETWKS001

Recordings in this product copyright
 © 2012 JET COLLECTIVE under licence
 to JETWORKS RECORDS



KAREN CLEGG

vocals, melodica, flute, recorder solos
 piano on 4 & 5
 keys/synth on 1, 4, 7, 8, 11
 vibratone, rain & thunder percussion,
 chimes, bells, shaker on 12, sharp claps
 electronic drums on 8



PAUL BIGGINS

piano on 1, 4, 8, 10
 keys on 7
 bass on 3, 11, 13
 spanish guitar on 2, 5, 7, 12
 mandolin



STEVE SALFIELD

tenor sax on 1, 2, 4, 7, 8, 11, 13
 soprano sax



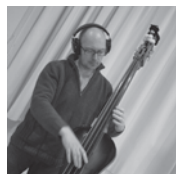
REG CLEGG

guitar
 nylon guitar solo
 backing vocals on 2
 production



SARA LITTLEFIELD

tenor sax on 1, 2, 4, 7, 8, 9, 10, 11
 alto sax
 growls & whistles



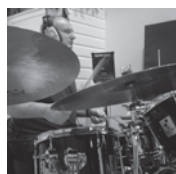
PAT SPRAKES

bass on 1, 2, 4, 5, 6, 7, 8, 9, 10, 11,
 spanish guitar on 3



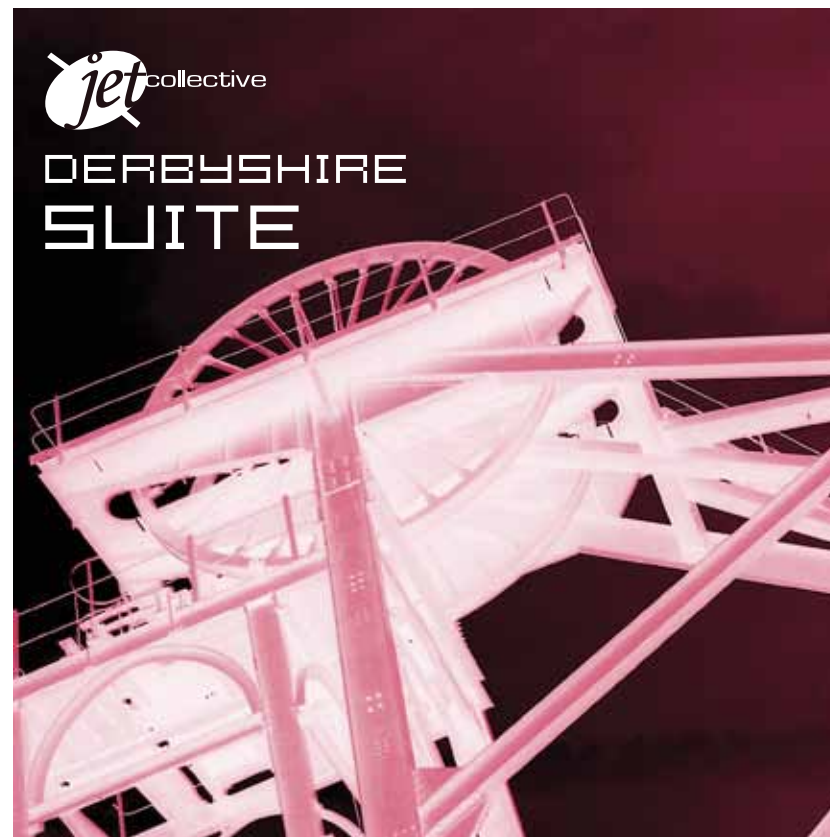
WENDY KIRKLAND

piano on 1, 6, 9, 11
 electric piano on 2, 7, 10
 recorder, multiple claps, egg shaker,
 tambourine, triangle
 percussion



CLIVE LOVEDAY

drums & percussion



INSIDE THE DERBYSHIRE SUITE

"Wonderful exciting music – so vibrant, and of such quality. Jazz themes but with folk hints lurking in the background. It caught the mood and experiences of Derbyshire, from the mines to the morris men. The JET Collective definitely deserves a much bigger stage. If only a BBC producer had been present!!"

"Just listened to the recordings and they are brilliant. This is interesting & beautifully crafted music!"

"Sounds great, excellent compositions, recording and performances!"

"A fantastic sound – the pieces were all so unique"

The eight musicians of JET COLLECTIVE first came together on the hottest weekend of the summer in 2011 to play and create some new music – and then perform it on the Sunday evening – WHO KNEW WHAT WOULD HAPPEN?

They created a new suite of music inspired by Derbyshire landscapes, customs and tales – The ‘DERBYSHIRE SUITE’ was first performed in June 2011 in Stanton in Peak and received an ecstatic reception with standing ovations. Expanded for a performance in Winster in October 2011, the complete suite consists of 13 pieces reflecting inspirations ranging from morris dancing, the natural environment and ancient stone circles to industrial heritage and modern commerce. The musicians bring influences from folk, rock, classical and all with a strong jazz background, and the music draws on various styles and it all has a strong jazz influence with improvisation an important component.



TRACK NOTES & CREDITS

‘STORM OVER DERBYSHIRE’: I wanted to capture the grandeur and power of a summer storm rolling across the dales and moors, from the initial approaching curtains of rain, to the first raindrops, to the down pour, to a brief calm in the eye of the storm, and then more intense electrical activity, before the storm heads away, leaving just puddles and sunshine breaking through.

‘SUMMER PEAKS’ is inspired by the Peak District landscapes on a summer’s day; the bossa nova rhythm reflects the easy nature of a day wandering in the Derbyshire Dales, basking in the sun. The haunting melody is reminiscent of a ditty whistled by a fellow walker out on the same day.

‘DERBYSHIRE JIG’: English folk tunes, flamenco claps, African guitar and rhythms come out to play. This bright, rhythmic number reflects the broad spectrum of cultures in Derbyshire today.

‘MILLS & HILLS, MINES & MOORS’ reflects both the beauty of the landscapes and the industrial heritage of Derbyshire; the piece is made up of five phrases triggered by Steve’s ‘conductance’ of the musicians.

‘EYAM’ is inspired and based on poetry by Miss Seward written at the turn of the 19th Century, and is about the funeral crowns and garlands made for the virtuous young women from the village, who had died from plague and other illnesses, and placed over the seat where they would sit in church.

DERBYSHIRE SUITE

EYAM

Now the low beams
With the paper Garlands hung
In the memory of
Some village youth or maid
Draw the soft tear from
Remembrance sprung
How oft my childhood
Marked that tribute paid

Cracked, Jagged
Smashed, Fragile
White, Deadly
Frozen, Dead
Vast, Broken
Grey, Blue
Waiting, Sleeping
Lifeless, Breathing

The gloved hand suspended
By the Garland’s side
White as it’s snowy flowers
With ribband tied
Dear Village! Long may
These wreaths funeral spread
Simple memorials
Of the early dead

ARBOR LOW

Arbor Low
Arbor Low
Four stones
Flat plateau
Circle glow
Silt below
Titan slow
Arbor Low

Solemnly, mournfully
Dealing in stones
Curfew bell
Beginning to toll

Arbor Low
Arbor Low
Four stones
Flat plateau
Silt below
Circle glow
At ground zero
Arbor low

Human burial
Unknown cove
The clock ticking
On Hanging hill

HAVE YOU SEEN THE MOON?

255,071 hectares

630,366 acres

Peak District reservoirs
supply 450 million litres of
water a day

3,300 miles of roads

Over 50 million live within
four hours of the Peak
District

Over 16,000 companies

Estimated population over
763,700

Exports more per person
than any other place in
England

WITH YOU & THE LARKS

Oh turn love
Turn I pray
I prithee love
Turn to me
For violets
The sweetest shower

THE DEVIL’S ELBOW

In the legend of the devil’s
elbow
A meeting place between two
lovers
But their father was against
the union
He would rather the devil take
his daughter
When they next met
The devil appeared
And he chased them across the
moorland
Chased them across the moors
And the devil came up behind
them

He reached out to claim his
prize
Then a mighty voice cried out
And the devil’s bent arm
turned to stone
So he ripped it out and threw
it on the moor
Forming the new bend in the
road
But recently, a strange black
form
Sliding from the moorland
across the road
And you can still see him
At the Devil’s Elbow

THIS IS MORRIS DANCING

Winster wakes
There are ales and cakes
Elton wakes
There are quenchers
Bercher wakes
There are knives and forks
Wensley wakes
There are wenches

This is it

This is it

This is Morris Dancing

This is it

This is it

This is Morris Dancing
The Piper fell and broke his
neck
And said it was a chancer
This is it
This is it
This is Morris Dancing

(You don’t know
And I don’t know
The fun we had at Brampton)

SHAW CROFT

It’s a good old Game
Deny it who can
That tries the pluck
Of an Englishman?

For loyal the Game
Shall ever be
No matter when or where
Treat the Game as ought but the
free

Through the ‘ups and downs’
Of its chequered life
There’s a town
Still plays this glorious Game
And year by year
The contest’s fought
From the field that’s called...
Shaw Croft

It’s a good old Game
Deny it who can
That tries the pluck
Of an Englishman?

And year by year
The contest’s fought
From the field that’s called...
Shaw Croft

‘DOWN IN YON FOREST’: a haunting, chiming piano trio version of the hugely popular Castleton Carol. Jazz waltz rhythms meet folk melody and minor blues in this innovative arrangement.

‘ARBOR LOW’ focuses on the supernatural qualities of the eponymous Derbyshire Stone Circle, a large henge near Bakewell. Described as a ‘clock face of teeth’ it is associated with strange occurrences as is the legend of nearby Gib (Hanging) Hill. We also took inspiration from the ghostly writings of local author Robert Murray Gilchrist.

‘HAVE YOU SEEN THE MOON?’: An audio landscape of modern Derbyshire: urban, commercial, progressive, vibrant. The title – inspired by an unexpected and thoughtful text message – visualises the moon rising through office blocks and over streaming motorways. The song structure itself incorporates growth, increasing by an extra phrase in each verse, until it tips naturally and logically back into the intro sequence.

‘BACK HOME’: This is a reflective piece from Sara, about returning home after a day on the peaks and fells.

‘WITH YOU AND THE LARKS’: In praise of upland Derbyshire, of walking on the high moors with a friend, or maybe the thoughts of a friend, and the song of larks high on the breeze. The EBM ascent is inspired by Vaughan Williams’ ‘The Lark Ascending’. The words are from Derbyshire author R. Murray Gilchrist’s supernatural short story, ‘The Lost Mistress’.

‘WHITE PEAK, DARK PEAK’ splits the Collective into two bands, the white peak bright band and the more sinister dark peak sections, reflecting the Derbyshire Peak landscape’s dual personality. The piece then segues into ‘THE DEVIL’S ELBOW’ which is based on a legend of a man opposing his daughter’s marriage – he would rather she wed the Devil. But the Devil’s arm turned to stone so he ripped it out and threw it on the moor, to form a bend in the road. It is said that you can still see a strange black form gliding across the moorland near the road, which is known as ‘The Devil’s Elbow.’

‘THIS IS MORRIS DANCING’: This is based on the unique Derbyshire Morris Dancing traditions such as the Winster’s the King, the Queen, the Witch and the Fool, but re-imagined within a contemporary music setting and with darker ideas and melodies. The words are adapted from the traditional Winster Wakes ditty.

‘SHAW CROFT’ is the site of the starting point of the famous Ashbourne Shrove Tuesday football match in which the whole town participates as two teams, the ‘Ups’ and the ‘Downs’; The objective is to battle to get the ball to the other end of town and score to win the match. The tradition still continues every year. The words are from a poem by George Porter written in 1891 who lost an arm playing the game a few years earlier.



The recently completed studio recording of the ‘DERBYSHIRE SUITE’ is available on CD from the JET Collective directly, or available to download from i-tunes, amazon and other online sites.

Listen to tracks from the CD and the live recording from Winster of the ‘DERBYSHIRE SUITE’ on www.jetcollective.org